

# WIEGMANN AUCTIONEERS

812 E. Tillman Road  
Fort Wayne, IN 46816  
**(260) 447-4311**  
WIEGMANAUCTIONEERS.COM  
Ron#AU08900060



# WIEGMANN WILL SELL

ESTABLISHED IN 1945  
NOT THE OLDEST, NOT THE LARGEST, BUT THE BEST



**1,638 sq ft.  
3 Bedroom  
Ranch Home  
on Basement  
w/2.36 acres**



**10115 Seiler Road  
New Haven, IN 46774**

Directions: Minnich Road to Seiler Road, West to auction site.  
Watch for signs

**SATURDAY  
MAY 22, 2021  
Personal Property @ 9 AM  
Real Estate @ Noon**



**2001 Saab 93**  
4 dr Hatchback, Sunroof,  
5 speed, Leather Interior,  
Bucket Seats  
vin#YS3DD55H912050962

**1999 Saab 95**  
4 dr, 5 speed, Leather  
Interior, Sunroof  
vin#YS3ED45E2X3070297

**1994 Saab 900 Turbo**  
16 valve, 2 dr  
Convertible, Leather  
Interior, 5 speed  
vin#YS3AL76L9R7002168

**1992 Saab 900 Turbo**  
16 valve, Convertible,  
Leather Interior, 5 speed  
vin#YS3AL75L4N7011676

**1993 Ford Ranger XLT**  
4 speed, 6 cylinder,  
73,643 miles,  
vin#1FTCR10A6RUA08336

## 1,638 sq ft, 3 Bedroom Ranch Home on Basement w/2.36 acres

**Kitchen 12x14:**  
Built in Stove & Oven  
Dishwasher  
Garbage Disposal  
Laminate Floor  
Pantry

**Dining Room 11x13:**  
Laminate Floor  
Chandelier

**Store Room 9x7:**

**½ Bath/Laundry 7x7:**  
Tile Floor  
Electric Hook-ups

**Living Room 14x27:**  
Laminate Floor  
Woodburning Fireplace

**Bedroom 12x12:**  
Laminate Floor  
Closet

**Bathroom 7x8:**  
Tub/Shower  
Closet  
Vanity  
Vinyl Floor

**Master Bedroom 12x15:**  
Laminate Floor  
Fan/Light

Closet  
**Ensuite 4x9:**  
Walk-in Shower  
Tile Floor

**Bedroom 12x12:**  
Fan/Light  
Laminate Floor  
Closet

**Hallway Closet:**

**Foyer 5x14:**  
Laminate Floor  
Guest Closet

**Addtl Amenities:**  
Full Basement  
Garden Shed  
Lean-to  
Wood Deck  
Blacktop Drive  
Oversize Garage w/Opener  
Well  
City Sewer

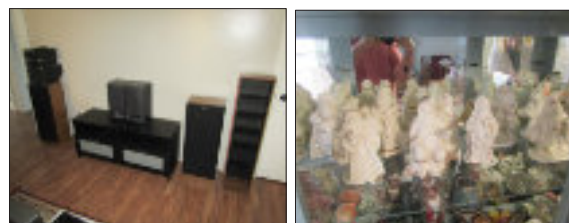
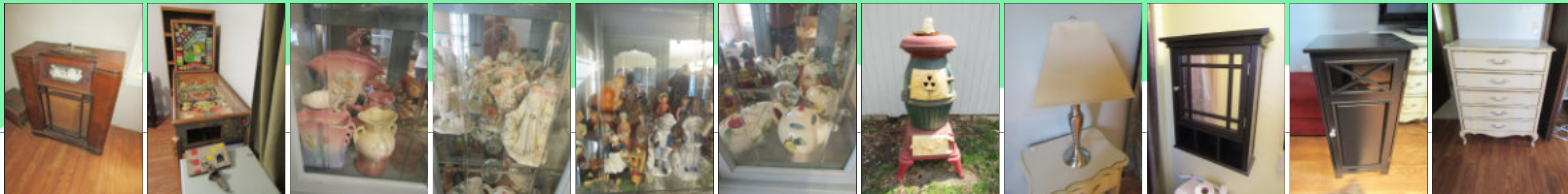
Built in 1977  
Allen County  
Adams Township  
School District:  
East Allen County  
House Finished 1,638 SQ FT  
Annual Taxes: \$1,779.54

**TERMS ON REAL ESTATE:** \$5,000.00 DOWN balance due on closing. Property sold subject to confirmation of personal representative. Property sold as-is, where-is. Property sold for cash. (The sale of this property may be financed; however, the sale of this property IS NOT CONTINGENT to financing approval). The information stated in this brochure is the opinion of Wiegmann Auctioneers, Inc. and its agents; however, the decision to bid on the real estate property is entirely up to the individual bidders based on their own individual inspections and opinions. All measurements and tax information are from reliable sources, however, are not guaranteed to be accurate. Statements made day of auction takes precedence over any and all previous oral or written matter. Real Estate closing to be within 45 days of the auction date or sooner. \*REAL ESTATE TAXES: Real estate tax information stated indicates what the current owner is required to pay and is merely a guideline (the new buyer's real estate taxes may or may not be the same as what the current owner is required to pay). Real Estate taxes prorated to date of closing.

**TERMS ON PERSONAL PROPERTY:** Payment forms: Cash, checks, MC/Visa/Discover (3% credit card convenience fee). All items sold as-is. Statements made day of sale takes precedence over printed matter. All sales are final. Not responsible for accidents.

**Neil Volz Estate  
Jennifer Rang, PR**

Check out our website for all our auctions • [Wiegmannauctioneers.com](http://Wiegmannauctioneers.com)



## Vehicles, Lawn Tractors, Trailers, Camping Trailer, Fishing Rods & Reels, Aluminum 16' Fishing Boat & Motor, Shop Tools, Appliances, Furniture, Household Items, Lots of Car Parts!

**VEHICLES:** Electric Golf Club Car; Teardrop 2 Person Camper

**ANTIQUES/COLLECTIBLES:** Williams Pinball Machine; HO Gauge Trains & Villages; 1930's Chrome Kitchen Table; Cannon Potbelly Stove; Silvertone Radio; Hull Vases & Pitchers; Lenox Santa Collection; Yellow Depression Glassware.

**APPLIANCES/ELECTRONICS:** Frigidaire Top Freezer Refrigerator; Whirlpool Washer & Dryer Set Electric; Maytag Upright Freezer; Hamilton Beach Microwave; Arctic Fresh Dorm Freezer; Primo Water Machine; Homes Humidifier; Kenmore Canister Sweeper; Haire A/C; Kenmore Window A/C; DeLonge Heater; Portable Pelonis Heater; Small Appliances; Singer 9410 Sewing Machine; Singer Sewing Machine; Floor Fan; Window Fan; Travel Iron; Emerson 42 Inch TV; Technics Entertainment Tower w/Speakers; HP Scanner/Printer; Electronics.

**FURNITURE/HOUSEHOLD:** 4 pc French Provincial Bed Set: Chest, Dressing Table, Pair of Side Tables; Credenza; Entertainment Cabinet;

Kitchen Table w/2 Chairs; Lighted China Hutch; Sofa & Chair w/Ottoman; 4 Drawer Chest; Desk; Office Chair; Bar Stools; Bathroom Cabinets; Bathroom Wall Cabinet; Bookshelf; Foyer Table; Ice Cream Parlor Set; Wall Shelf; Wood Shelf; Pair of French Provincial Side Tables; Pair of Round Glass Top Table; Side Tables; Folding Table & Chairs; Table Lamps; Floor Lamps; Pair of Lamps; Plant Stands; 7x10 Area Rug; 8' Diameter Area Rug; Wall Decor; Wall Mirror; Wall Pictures; Baking Dishes & Pans; Corelle Dish Set; Flatware; Granite Roaster; Knives; Pots & Pans; Utensils; Linens.

**FISHING/HOBBY:** 16' Aluminum Rowboat w/Trailer; 16' & 20' Fiberglass Fishing Poles; Eagle Portable Depth Finder; Fishing Nets; Minn Kota Endurr C-2 Trolling Motor 24.9kg; Shakespeare Fly Rod & Reel; Astro Hog Remote Control Airplane; Tiger 60 Remote Control Airplane; Skylane Remote Control Airplane; Tiger II Airplane Blue Print; Unfinished Remote Control Plane; Misc. Airplane Wings.

**LAWN/GARDEN:** Gas Hydraulic Driven Log Splitter; Simplicity 7114 14hp Lawn Tractor; Power King All Gear Drive 1612 Lawn Tractor; 21" Yard Machine Mower; 5HP Garden Tiller; Garden Trailer w/Tilt Bed; 3x4 Lawn Trailer; 24x36 Lawn Roller; Pulling Pro 42CC Gas Chainsaw; Eager Beaver Gas Chainsaw; 26' Aluminum Extension Ladder; 3' Aluminum Folding Painter Bench; 6' Aluminum Step Ladder; Femco Lawn Sprayer; Lawn Spreader; Weber Gas Grill; Yard Ornaments; 8x14 Canopy Garage.

**TOOLS/CAR PARTS/MOTORS:** Auto Darkening Welding Helmet; Brad Nailer; Crossbar Dent Puller; Grinding Wheel Resurfacer; Oscillating Cut Off Saw; Tape Measure; Wheel Balancer; Wood Workbench; Bar Clamps; Spools Of Electrical Wire; Gas Powered Water Pump; Car Seats, Door Panels; Campbell Haus 15 Gallon Portable Air Compressor; Small Hand Tools: Sockets, Wrenches, Hammers, Files; 10 Amp Battery Charger; Craftsman Router Table; 3T Bottle Jack; 1/2" Air Impact Wrench; Paint Guns; Angle Grinders; Palm Sander; Craftsman Belt Sander; Drills, Saws; Mig Saw; High Speed

Dremel; 1/2" Torque Wrench; Inside Outside Calipers; 40 pc Tap & Die Set; Drillbits; Tapered Drill, Countersink/Bore & Stop Collar Set; Tripod Feeder; Aluminum 2 Wheeled Dolly; Multi Meter; Fluke Model 33; DeWalt Drill Bits; Punches, Chisels, Pipe Wrenches, Vice Grips; Bolt & Nut Organizers; 4" Vice; T-Bars; Bolt Cutters; Jack Stands; 3T Engine Hoist; Car Parts: Heads, Carburetors, Manifold, Bumpers, Dashes, Gas Tanks, Crankshafts, Intakes, Radiators, Engines; Johnson 5HP Boat Motor; Saab Pistons; Saab 16 Valve Motor; Saab Auto Manuals; Pair of Van Seats.

**MISC:** 3-Wheel Bike; Bikes; Bushnell 10x50 Binoculars; Schwinn Airdyne Exercise Bike; Wheelchair, 4 Wheel Walker; CD's; Coolers; Craft Books; Dymo LetraTag Label Maker; Driveaseal 5 Gallon Bucket Sealer; Embroidery Thread, Hoops & Frame; Fire Extinguishers; Firewood; Knitting Needles; LP Double Gas Burner Camping Stove; Teton XL Cot w/ Bag; Plastic Storage; Plastic Shelving; Pocketknives; Rubbermaid Cabinet; 3' Folding Step Stool; Patterns; Yarn.

